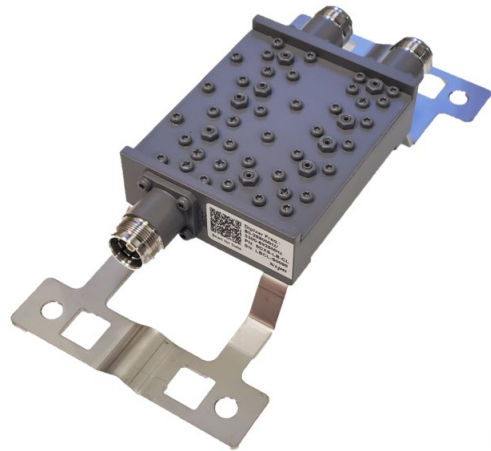


80-2690 & 3300-5925 MHz Diplexer for CBRS/C-Band

SDXS-LB-CL & SDXT-LB-CL

Indoor rated Diplexer for 80-2690 & 3300-5925 MHz Band Combining for multi-band DAS.

- Easy integration of CBRS/C-Band combining in the multi-band DAS
- Wall Mountable Single Diplexer
- Single & Twin Models
- Low Insertion/High Port Isolation
- Compact Size for Easy Installation
- Indoor IP54 Rated
- Low PIM Rated



Parameter		Specifications	
Model	Single	SDXS-LB-CL	
	Twin	SDXT-LB-CL	
Input Port Number		Port 1	Port 2
Freq. Range [MHz]		80-2690	3300-5925
Insertion Loss [dB]		0.3	
Return Loss [dB]		18	
Port Isolation [dB]		50	
Power Rating [W]		150	
PIM [dBc]		-161	
IP Rating		IP54	
Operating Temp. [°F]		-40 to +149	
RF Connector		4.3-10 Female	
Size (W x H x D)		Single: 3.15" x 3.98" x 1.14", Twin: 3.15" x 3.98" x 2.72"	
Weight [lb]		Single: 1.65, Twin: 3.9	

* Specifications are subject to change without prior notification.

Rev.6

80-2690 & 3300-5925 MHz Diplexer for CBRs/C-Band

SDXS-LB-CL & SDXT-LB-CL

Mechanical Drawing

